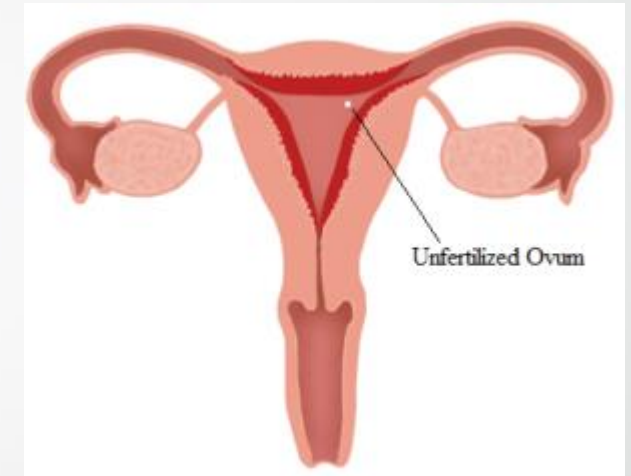


What happens to the egg cell

7ab

If the egg cell is not fertilised

- Most egg cell cell not fertilised
- They just carry on travelling along the oviduct and eventually die
- One egg cell is released from an ovary each month
- The uterus has to get ready, just in case the egg cell is fertilised
- The lining of the uterus becomes thick and spongy, ready to receive the embryo



New words

Oviduct – умайн гуурсан хоолой

Ovary – өндгөвч

Uterus - Умай

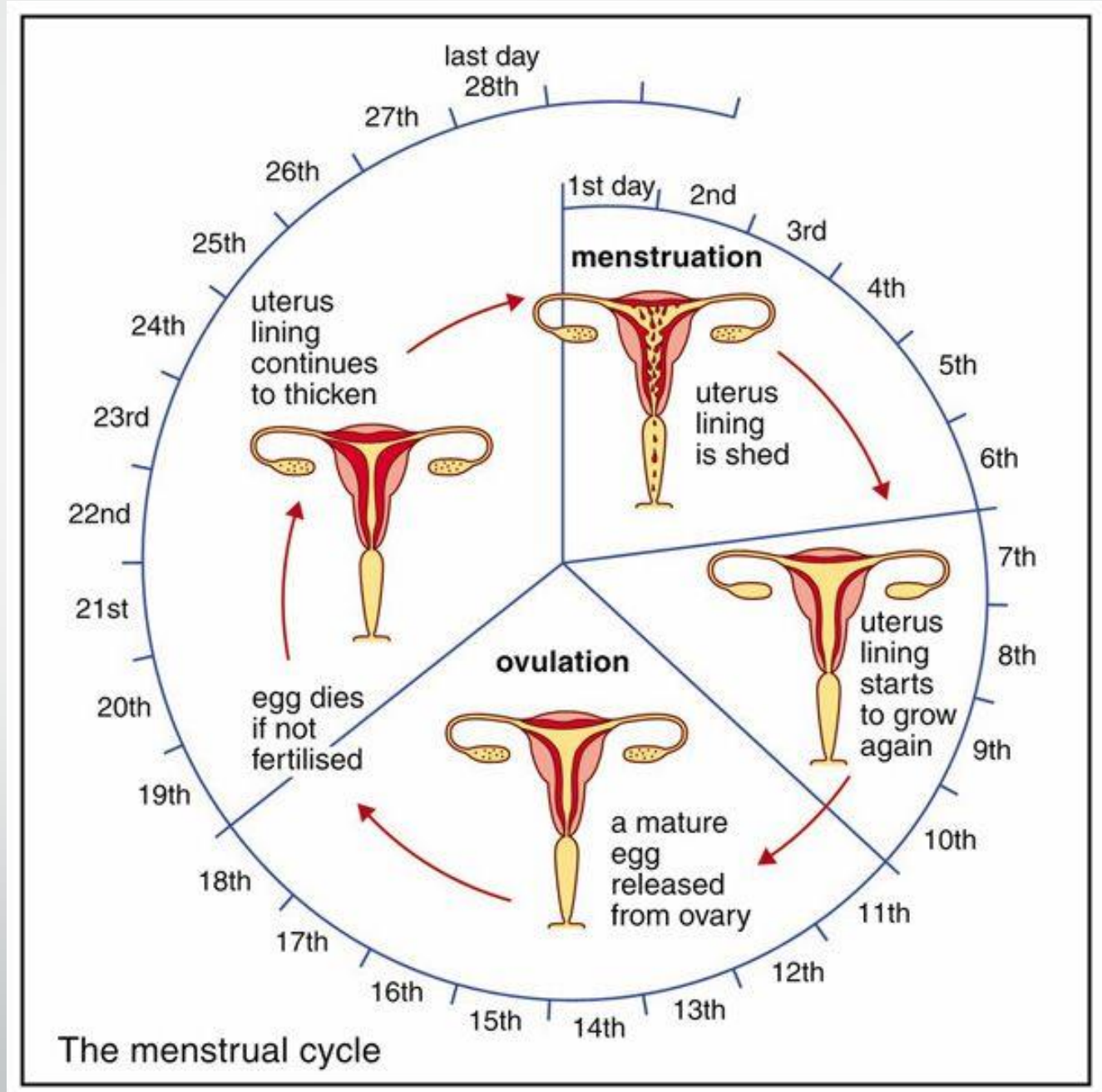
If egg cell is not fertilised

- If egg cell is not fertilised , this thick lining is not need
- It is breaks down, and lost through the vagina
- In the adults woman, this takes about five days and happens about once a month
- The loss of the uterus lining through the vagina is called **menstruation**.
- The monthly pattern of the thickening and loss of the uterus lining is called the **menstrual cycle**

Thick lining – зузаан хана
Uterus lining –умайн хана
Menstruation – Сарын тэмдэг
Menstrual cycle- сарын тэмдгийн мөчлөг

The menstrual cycle

1. An egg cell develops in an ovary. The lining of the uterus start to grow thicker
2. The egg cell is released from the ovary. The lining of the uterus becomes thick and spongy
3. The egg cell was not fertilised,so it just travels on into the uterus and dies
4. The tick, spongy lining of the uterus breaks down and is lost through the vagina



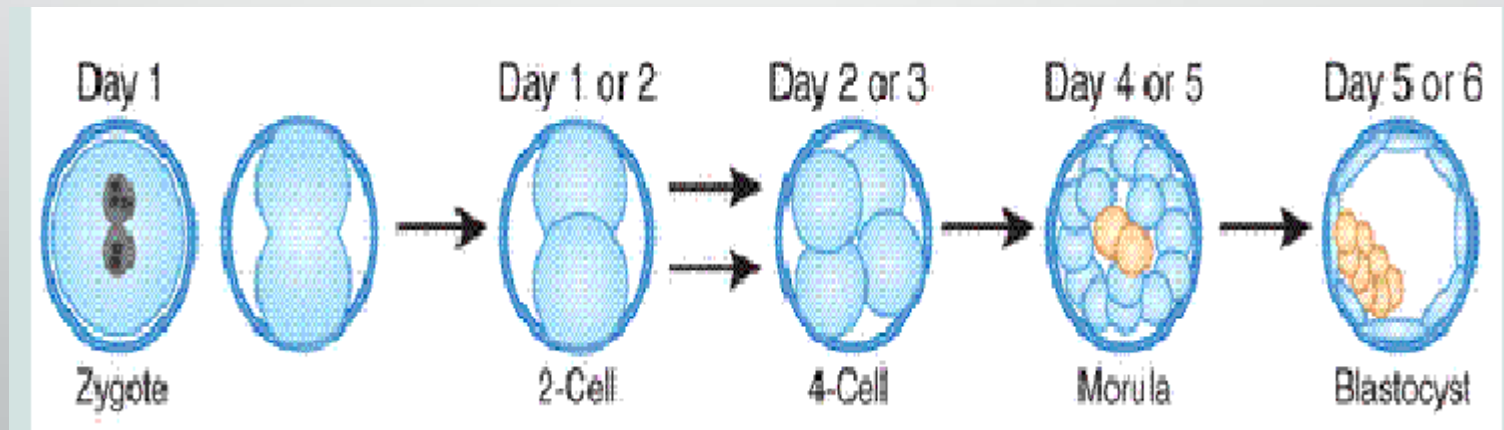
Questions

1. Why does the uterus lining start to grow thick and spongy, as an egg cell develops in an ovary?
2. What happens to the uterus lining if egg cell is not fertilised?
3. How often does an egg cell leave an ovary, in adult women?
4. How often does menstruation happen, in adult women?

1. The uterus has to get ready, just in case the egg cell is fertilised
2. It breaks down, and is lost through the vagina
3. About once a month
4. About 5 days

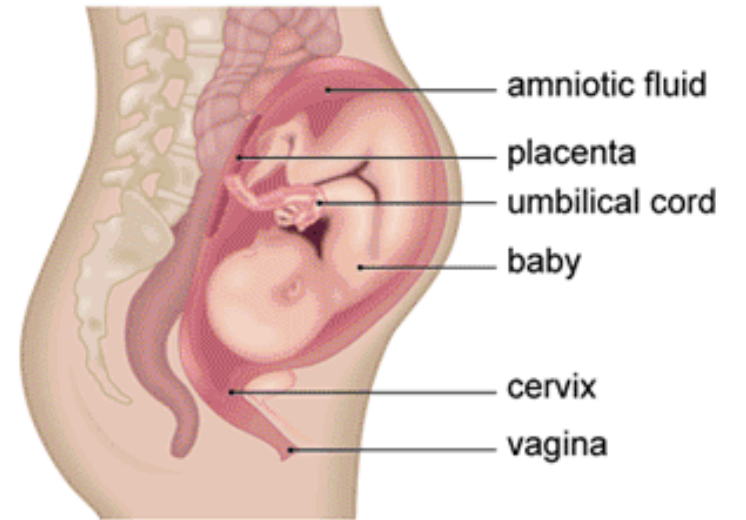
If egg cell fertilised

- Soon after fertilisation, zygote begins to divide
- The single cells, then four and so on
- Each cell divides over and over again
- As the embryo grows into a foetus, foetus grows into a baby



From the embryo to baby

- The embryo sinks into the thick, sponge lining of the uterus
- To grow and develop, the embryo now needs more food
- A special organ develops
- It is too obtain food and oxygen from its mothers blood
- This organ is the **placenta**
- The embryo is attached to the placenta by **umbilical cord**



The baby and surrounding structures in late pregnancy

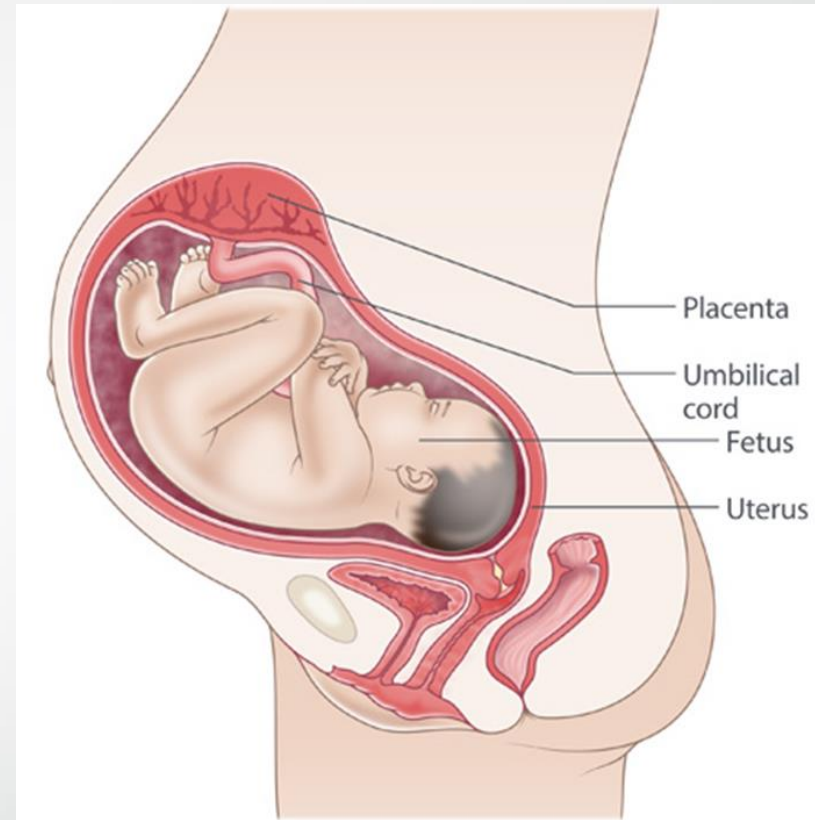
Placenta – Ихэс
Umbilical cord- Хүйн судас

- 
- <https://www.youtube.com/watch?v=SiNHMWkJYso>
 - https://www.youtube.com/watch?v=vXrQ_FhZmos

Baby

1. The embryo floats in its own private pond, containing amniotic fluid.
2. Amniotic fluid support the embryo, and protects it from bumps and knocks

Amniotic fluid- ургийн ус



Questions

1. In which part of the body does the growing embryo develop?
2. Explain how the growing embryo obtains food.
3. What is the amnion, and what is its function?

1. Uterus
2. It is too obtain food and oxygen from its mothers blood
3. Amniotic fluid support the embryo

Foetal development

- By the time it is 6 week old, the embryo is about 4 mm long

All its major organs have begun to grow

- At the 8 week

Embryo is about 13 mm long, It is already beginning move

- At 11 week, 50 mm long all organs have developed, become a foetus
- 38-39 weeks after fertilization happened.
- The baby is now ready to be born

Questions

1. How long after fertilization does an embryo become a foetus?
2. How long after fertilization are most babies born ?

1. After 11 week
2. 38-39 week

