

Name : _____

Converting from 12-Hour to 24-Hour Clocks

Sheet 1

A) Convert each time from 12-hour to 24-hour clock.

1) 7.12 a.m. = 07 12

2) 10.05 p.m. = 22 05

3) 2.43 p.m. = _____

4) 5.31 a.m. = _____

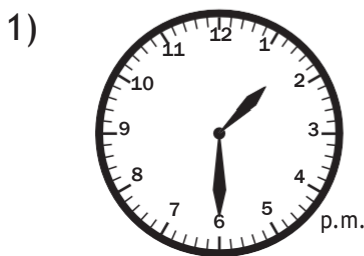
5) 9.24 a.m. = _____

6) 11.56 p.m. = _____

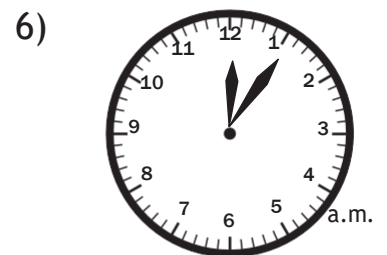
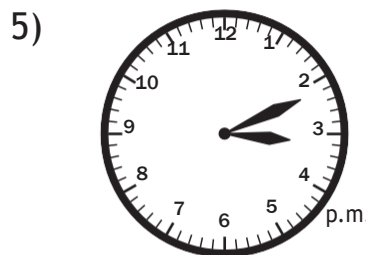
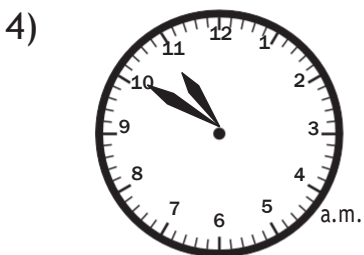
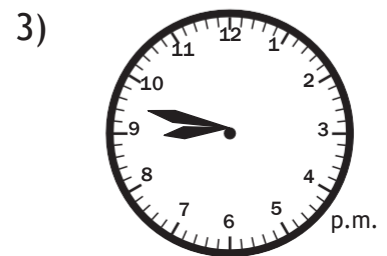
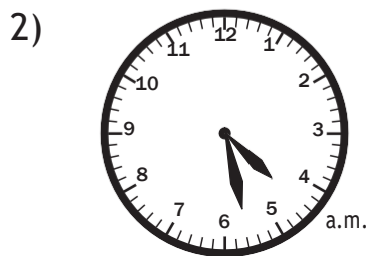
7) 6.39 p.m. = _____

8) 3.00 a.m. = _____

B) Read each analog clock, and write the time in 24-hour format.



13 30



C) The flight to Dallas will depart at 03:45 pm. Express this time in a 24-hour clock format.

Converting from 12-Hour to 24-Hour Clocks

A) Convert each time from 12-hour to 24-hour clock.

1) 7.12 a.m. = 07 12

2) 10.05 p.m. = 22 05

3) 2.43 p.m. = 14 43

4) 5.31 a.m. = 05 31

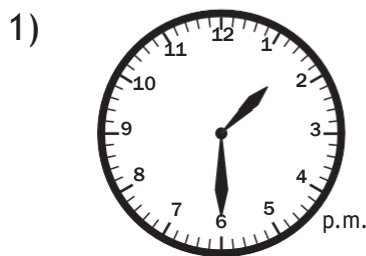
5) 9.24 a.m. = 09 24

6) 11.56 p.m. = 23 56

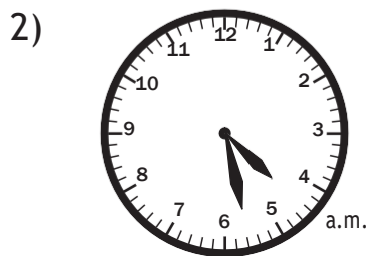
7) 6.39 p.m. = 18 39

8) 3.00 a.m. = 03 00

B) Read each analog clock, and write the time in 24-hour format.



13 30



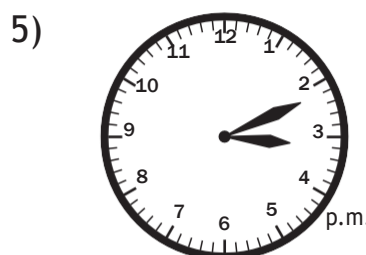
04 28



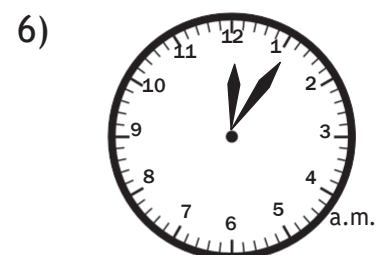
20 47



10 50



15 11



00 06

C) The flight to Dallas will depart at 03:45 pm. Express this time in a 24-hour clock format.

15 45