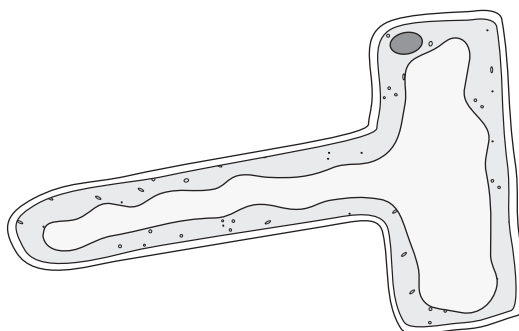


# Worksheet 1.3

## Water movement through plants



- 1 The diagram shows a root hair cell.



- a On the diagram, use label lines to label each of these parts of the cell:  
**cell wall**      **cell membrane**      **cytoplasm**      **nucleus**      **vacuole**

b Which part of the cell controls what enters and leaves the cell? .....

c Which part of the cell contains chromosomes? .....

- 2 Root hair cells absorb water and mineral salts from the soil. Explain how the shape of a root hair cell helps it to do this quickly.

.....  
.....

- 3 Explain why root hair cells do not contain chloroplasts.

.....  
.....

- 4 After the root hair cells have absorbed water and mineral salts, these substances move to the centre of the root. They go into tubes made of empty, dead cells joined end to end.

These tubes carry the water and mineral salts all the way up to the top of the plant.

What is the name of these tubes? .....

- 5 When the water gets to the top of the plant, some of it is used for photosynthesis.

Write the word equation for photosynthesis.

.....



## Water movement through plants: **Worksheet 1.3**



- 6** Most of the water is not used for photosynthesis. It evaporates from the cells in the leaf, into the air spaces inside the leaf.

Explain what is meant by the word *evaporates*.

.....

.....

- 7** Water vapour diffuses out of the leaf into the air.

What is the name of the tiny holes through which the water vapour diffuses?

.....