

toad

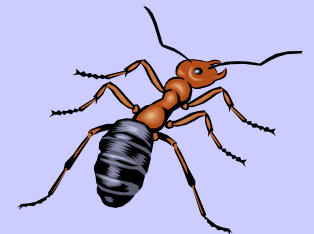


Animal Adaptations

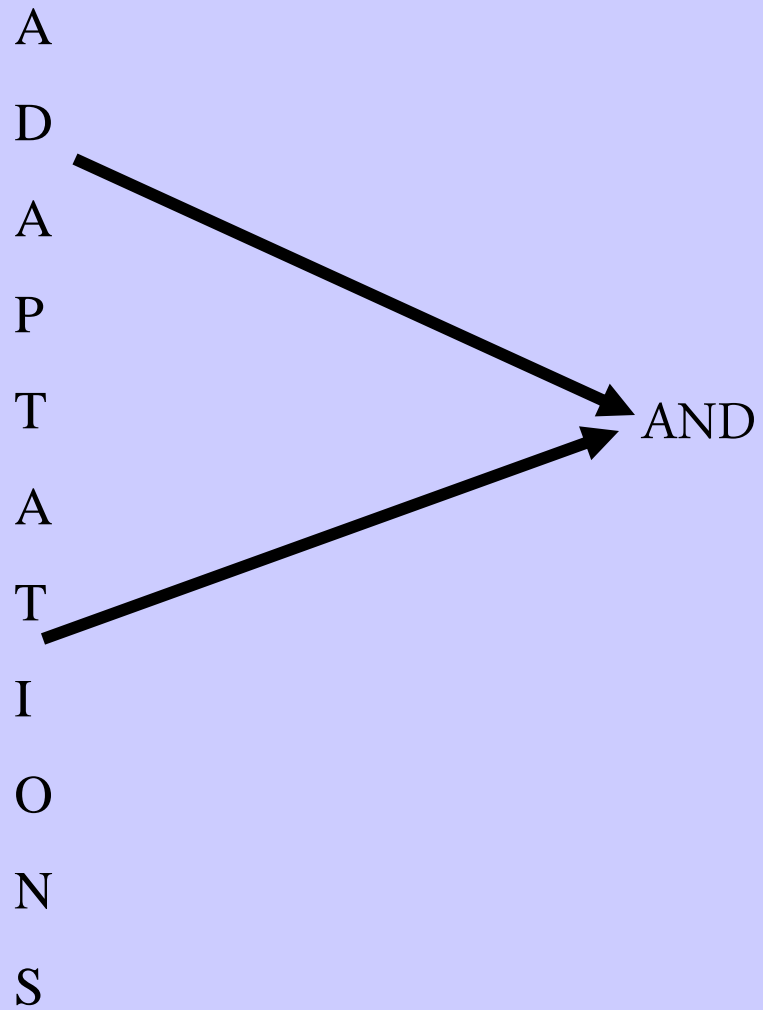
Have you ever wondered how animals are able to survive
in the wild?



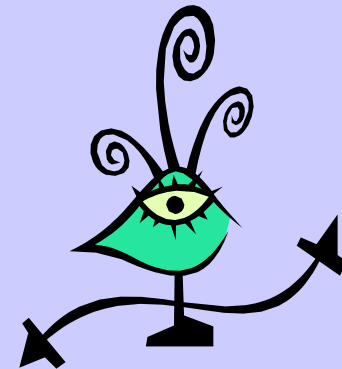
Animals have certain adaptations that help them
to survive.



We can separate **adaptations** into two categories:



Physical



Behavioral

© 2001 Steve Camazine



Hey! I'm a walking stick. I look just like a stick you'd find on the ground.

© A. Weinberg

Physical adaptations

are body structures that allow an animal to find and consume food, defend itself, and to reproduce its species.

Physical adaptations help an animal survive in its environment.

Physical adaptation

Camouflage (use of color in a surrounding)



The chameleon can change its **color** to match its surroundings.
Can you do that?

Physical adaptation

Mimicry

(looking or sounding like another living organism)

The Viceroy butterfly uses mimicry to look like the Monarch butterfly. Can you tell them apart?



Poisonous

I'm the Monarch!

I'm the Viceroy!

Not poisonous



Physical adaptation



Chemical defenses (like venom, ink, sprays)

Physical adaptations

Body coverings & parts (claws, beaks, feet, armor plates, skulls, teeth)



The elephant's **TRUNK** is a physical adaptation that helps it to clean itself, eat, drink, and to pick things up.

Now let's learn about
Behavioral Adaptations...



Behavioral Adaptations allow animals to
respond to life needs.

Behavioral Adaptations are animals' actions.

Remember that Physical Adaptations are body structures.



Each organism has unique methods of adapting to its environment by means of different actions.

We can divide **Behavioral Adaptations** into two groups:

Instinctive



These behaviors happen naturally & don't have to be learned.

Learned

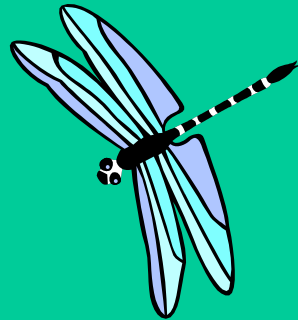


These behaviors must be taught.

Instinctive
behaviors

=

happen naturally & don't
need to be learned



*Methods of gathering
& storing food*

Defending oneself

Hibernating

Finding shelter

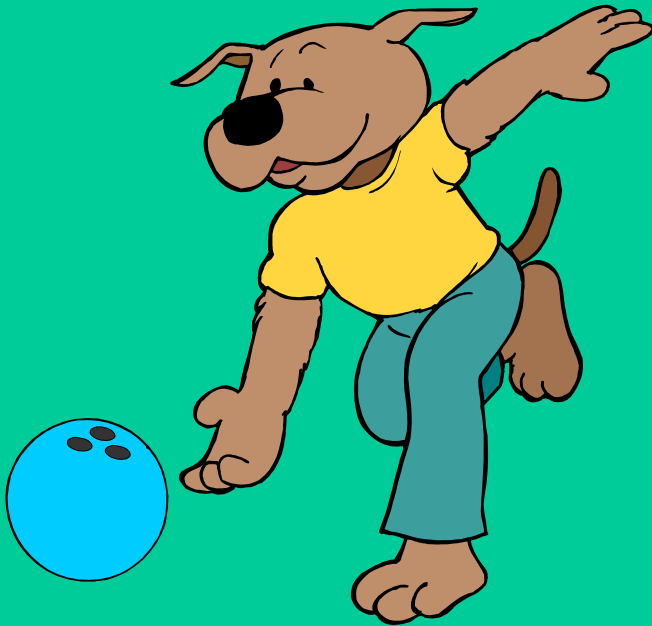
Raising young

Migrating

Learned behaviors

=

Obtained by interacting with the environment and cannot be passed on to the next generation except by teaching.



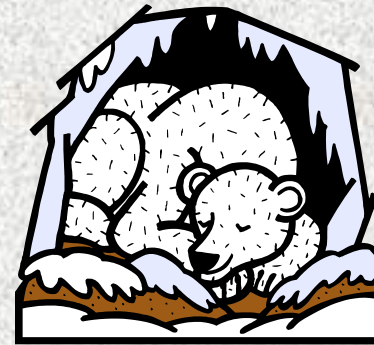
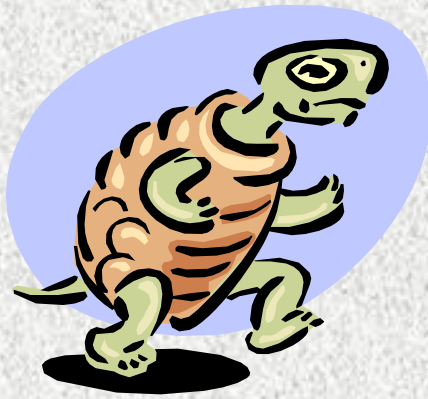
In this lesson, we have learned about
animal adaptations.

There are 2 ways to describe adaptations:

Physical

and

Behavioral



Physical adaptations are body structures.

Some examples of physical adaptations are:

 Camouflage

 Mimicry

 Chemical defenses

 Body coverings & parts

Behavioral Adaptations are animals' actions.

Behavioral Adaptations can be
Instinctive or Learned.

